

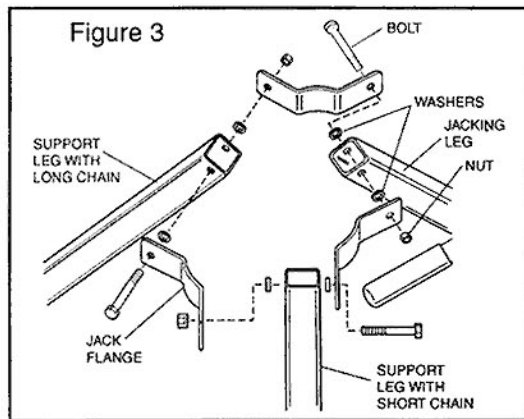
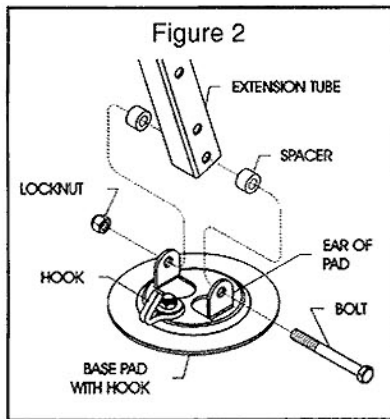
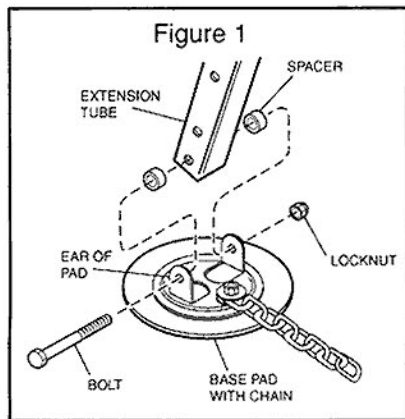


**MODEL 25035**

# KING PIN STABILIZING JACK

FOR USE ON FIFTH WHEEL TRAVEL TRAILERS

## ASSEMBLY AND OPERATING INSTRUCTIONS



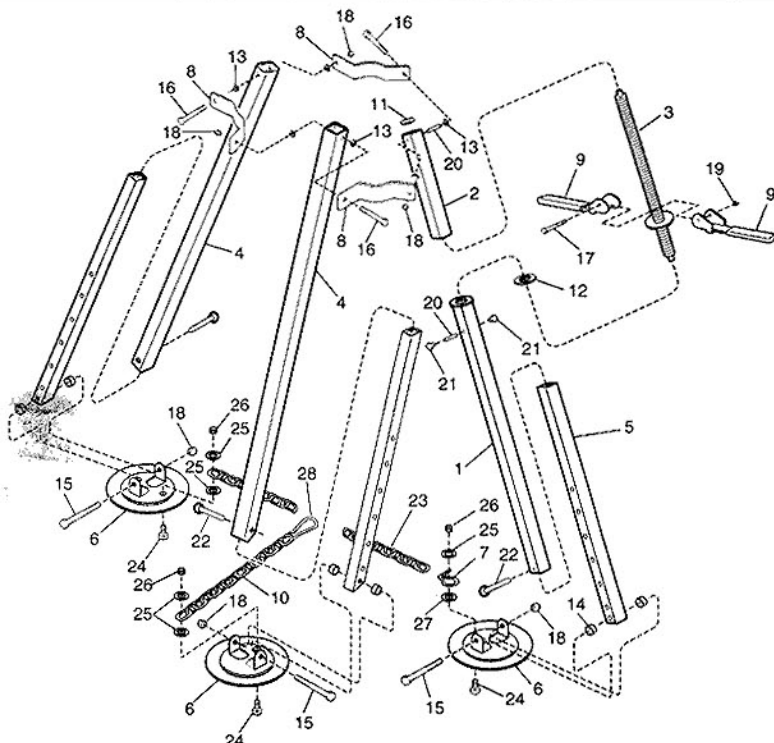
**SUPPORT LEG ASSEMBLIES:** 1) The base pad assembled with the long chain and base pad assembled with short chain and locking clasp fit on the bottom of the extension tubes which telescope inside the support legs. The chains should be positioned inbound as shown in figure 1. 2) Position the extension tubes between the ears of the base pads. Insert spacers between the extension tubes and base pad ears. Align the holes in the spacers, base pad ears, and extension tubes and secure with the bolts and locknuts provided.

**JACK LEG ASSEMBLY:** 1) The base pad assembled with the hook fits on the bottom of the extension tube which telescopes inside the jack leg. The hook of the base pad should be positioned inbound as shown in figure 2. 2) Position the extension tube between the ears of the base pad. Insert spacers between the extension tube and base pad ears. Align the holes in the spacers, base pad ears, and extension tube and secure with the bolt and locknut provided.

**MAIN ASSEMBLY:** 1) Connect the tops of the support legs and jacking leg with the three jack flanges, bolts, nylon washers and nuts provided (see figure 3).

## PARTS LIST

| INDEX NO. | PART NO. | DESCRIPTION                          | QTY |
|-----------|----------|--------------------------------------|-----|
| 1         | P852002  | OUTER TUBE ASSEMBLY (Jacking Leg)    | 1   |
| 2         | P852028  | TUBE/NUT ASSEMBLY                    | 1   |
| 3         | P852018  | SCREW ASSEMBLY                       | 1   |
| 4         | P852001  | SUPPORT LEG                          | 2   |
| 5         | P852004  | EXTENSION TUBE                       | 3   |
| 6         | P852031  | BASE PAD                             | 3   |
| 7         | R852011  | CHAIN HOOK                           | 1   |
| 8         | P852071  | JACK FLANGE                          | 3   |
| 9         | P852026  | HANDLE                               | 2   |
| 10        | R852039  | CHAIN, 28 INCHES                     | 1   |
| 11        | 502109   | WASHER, 7/16 USS ZINC                | 1   |
| 12        | R852010  | NYLON WASHER                         | 1   |
| 13        | 502103   | NYLON WASHER                         | 6   |
| 14        | 7034     | NYLON SPACER WASHER                  | 6   |
| 15        | 501128   | HEX HEAD BOLT, 3/8-16 x 3 1/4, GR. 2 | 3   |
| 16        | BAL1012  | HEX HEAD BOLT, 3/8-16 x 2 1/2, GR. 2 | 3   |
| 17        | R852017  | HEX HEAD BOLT, 1/4-20 x 1 3/4, GR. 2 | 1   |
| 18        | BAL1014  | NYLOK NUT, 3/8-16 ZINC               | 6   |
| 19        | R852016  | NYLOK NUT, 1/4-20 ZINC               | 1   |
| 20        | R858015  | GROOVED PIN, 3/16 x 3/4, TYPE A      | 2   |
| 21        | R852034  | 3/8 SHORT PLUG                       | 2   |
| 22        | R852013  | DETENT PIN                           | 3   |
| 23        | R852012  | CHAIN, 6 FT.                         | 1   |
| 24        | 502113   | HEX HEAD BOLT, 3/8-16 x 3/4          | 3   |
| 25        | 50189    | WASHER, 3/8 USS ZINC                 | 5   |
| 26        | R852032  | JAM NUT, 3/8-16 ZINC                 | 3   |
| 27        | R852030  | SPACER, 3/4 x .385 x .203, NYLON     | 1   |
| 28        | R852038  | LOCKING CLASP                        | 1   |



# OPERATING INSTRUCTIONS

**THIS STABILIZING JACK WAS DESIGNED FOR:**  
STABILIZING THE FRONT HALF OF A 5TH WHEEL TRAVEL TRAILER  
BY APPLYING SLIGHT PRESSURE AGAINST THE KING PIN.



## SAFETY WARNINGS:



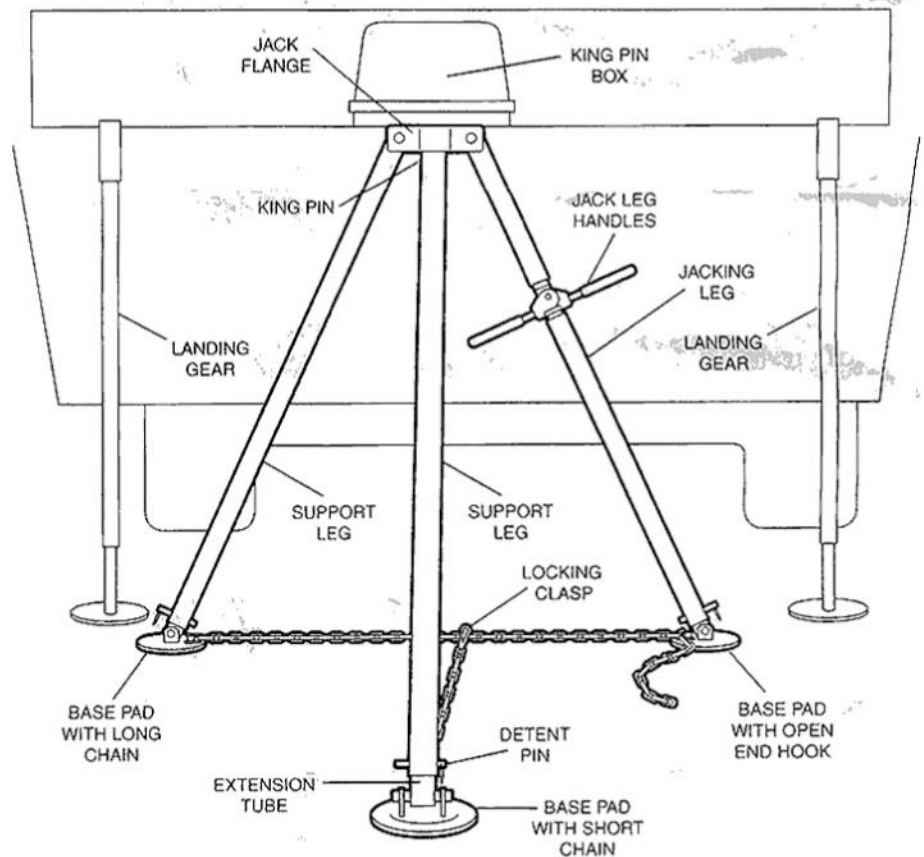
- **DO NOT** ATTEMPT TO USE THIS JACK FOR LEVELING.
- **DO NOT** ATTEMPT TO USE THIS JACK FOR LIFTING OR TAKING THE LOAD OFF THE TRAILER'S LANDING GEAR.
- **DO NOT** ATTEMPT TO USE THIS STABILIZING JACK FOR ANY PURPOSE OTHER THAN ITS INTENDED DESIGN.
- **DO NOT** PLACE HANDS OR FINGERS ON THE DRIVE SCREW. FOLLOWING THIS INSTRUCTION WILL PREVENT FINGERS AND HANDS FROM BEING PINCHED.

### STABILIZING

1. Position and level the front of your 5th wheel trailer by using your trailer's landing gear.
2. Raise the king pin jack assembly under the king pin until the king pin is located between the jack flanges. The top edges of all the jack flanges should be touching the king pin box. In order to accomplish this, it may be necessary to lower the extension tube/tubes, activate the jack leg or both. Make sure to position the three legs on the king pin where one of the support legs is directly out in front of the king pin (refer to drawing). There should be approximately a four foot distance between the base pad of the jacking leg and the base pad of the support leg that shares the same chain. The three base pads must sit flat on the ground.
3. Pull the end of the long chain from the base pad of the support leg through the locking clasp at the end of the short chain. The locking clasp should be positioned approximately mid-way in the long chain. Pull the long chain snug and place the closest chain link over the open end hook on the base pad of the jacking leg.
4. Pull down the jack leg handles and turn them in a clockwise direction until the chain is taut but not so that it takes the trailer's landing gear off the ground. Remember, the king pin jack is designed for stabilizing not lifting. To test for stability, push on either front corner of the trailer. There should be no side to side movement. Fold up the jack leg handles.
5. Move to the rear of your trailer and crank down your rear jacks.

### REMOVAL

1. Crank up your rear trailer jacks if you have any, then pull down the jack leg handles and turn them in a counterclockwise direction to remove the chain tension and to lower the top edges of the jack flanges from the king pin box.
2. Remove the locking clasp from around the links of the long chain. Disconnect the link of the long chain from the open end hook on the base pad of the jacking leg. Open the legs until the flanges clear the king pin.



**BAL**  
RV PRODUCTS GROUP

CORPORATE HEADQUARTERS  
365 W. Victoria St. • Compton, CA 90220 • (310) 639-4000